

Allahabad - Naini Bridge

India's biggest cable-stayed bridge
MAURER Swivel Joist Expansion Joints



Figures and Facts

Location:	Allahabad/Naini, India
Owner:	Republic of India, represented by the Ministry of Surface Transport
Contractor:	JV HCC / Hyundai
Design:	COWI Consult Cable-stayed bridge
Consulting engineers:	JV COWI-SPAN
Total investment costs:	40 million Euros
Utilisation:	roadway link between Allahabad and NH 27
Total Bridge Length:	370 m
Width of superstructure:	26 m
Main spans:	185 m – 260 m – 185 m

Involvement of Maurer Soehne

Supply and installation of 4 **MAURER Swivel Joist Expansion joints** with a length of 24,40 m each, delivered in two parts.

Movement capacity:
DS 400 (± 200 mm) 2 pieces
DS 720 (± 360 mm)
DS 1200 (± 600 mm)



Involvement of Maurer Söhne

India's biggest cable-stayed bridge, erected in the years 2001 - 2004, is located in Uttar Pradesh State and connects the cities of Allahabad and Naini next to the banks of the Yamuna River.

The old Naini steel-truss-bridge which has to accommodate railway- and car-traffic and is called the "Gateway to Eastern India", will be awarded with the urgently required relief from traffic load.

Maurer Soehne manufactured 4 Swivel Joist Expansion Joints with a length of 24,40 m each. This cross-sectional width of the superstructure considers 4 highway traffic lanes and two lateral 3m - tracks for "other" traffic and pedestrians.

Due to transport reasons, the joints were delivered in two pieces to be connected on job site. The joints can accommodate movements of ± 400 mm (at both abutments) and ± 360 mm and ± 600 mm respectively at the pylons.



Fig. 1: Joint manufacture in the workshop

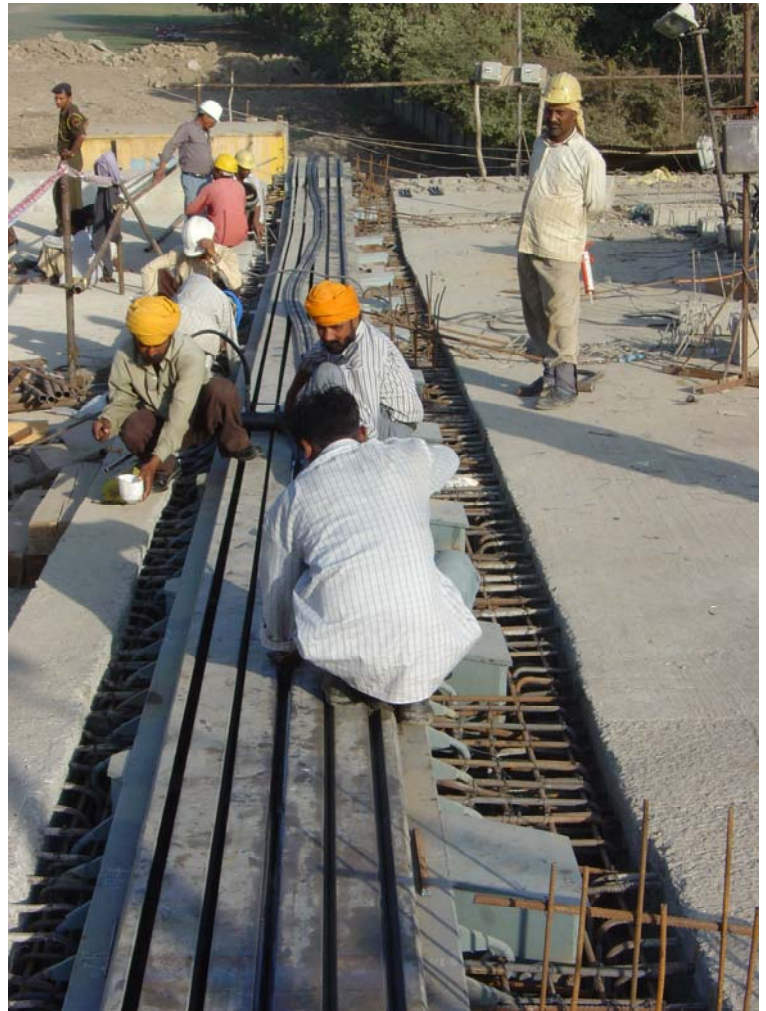


Fig. 2, 3: Joint installation